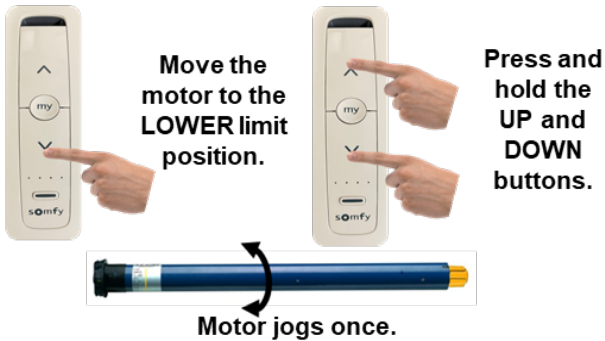
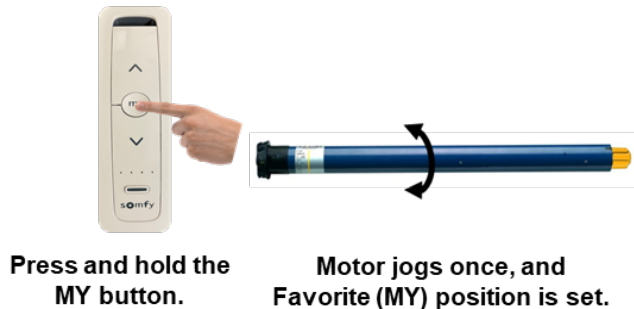
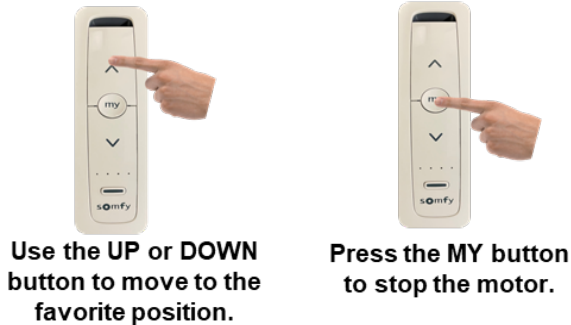


7. Resetting LOWER Limit Position



8. Setting/Modifying Favorite "MY" Position

ONLY ONE FAVORITE (MY) POSITION CAN BE SET:



9. Deleting All Memory and Reset Motor to Factory Settings

Move shade away from UPPER or LOWER Limits.



Unplug or turn off power for 2 Seconds.



Plug In or turn on power for 10 Seconds.



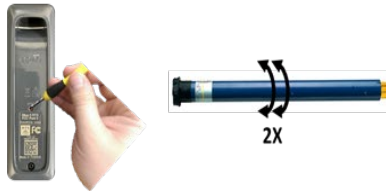
Unplug or turn off power for 2 Seconds.



Plug In or turn on power.



The shade will move for a few seconds or it will jog.



When it stops, HOLD Program button on back of remote for 7-10 seconds until shade jogs TWICE. All settings are erased.

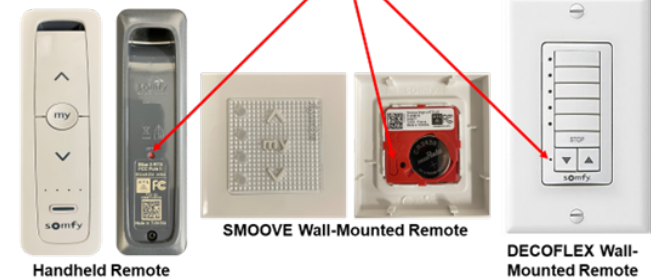
HOME DECOR
WHOLESALE FABRICATORS

Made in America

SOMFY
SONESSE 40
SONESSE 50
SONESSE 50 UQ
LT50 EXTERIOR

AC Motor
Set Up Guide

Program Button



HOME DECOR WHOLESALE FABRICATORS
602-995-9659



REV 100421

1. Waking Up Motor

IF MOTOR IS PRE-PROGRAMMED



Apply power. The shade is ready for operation.

IF MOTOR IS NOT PROGRAMMED



Apply power. The shade is ready for programming.

2. Programming



Press UP and DOWN at the same time on the remote.



Motor jogs once and is in programming mode.

3. Change Motor Rotation

CHECK MOTOR ROTATION. IF CHANGE NEEDED:



Press and hold MY button.



Motor jogs once, motor rotates in opposite direction

4. Upper & Lower Limit Position Setting



Press the UP or DOWN button to move the shade to the desired UPPER Limit position



Shade will Continue moving down.



Press the MY button when shade reaches desired LOWER limit position.



Shade will continue moving up to UPPER limit.



Press the MY and DOWN button and release when shade begins to move. UPPER limit memorized.



Press the MY and UP button and release when shade begins to move. LOWER limit memorized.

5. Finalizing the Programming

ONCE THE SHADE STOPS AT THE UPPER LIMIT:



Press and hold the MY button.



The shade jogs and the UPPER & LOWER limit positions are set.



Briefly Press Program button on back of remote.



The shade jogs and the UPPER and LOWER limit positions are recorded.

6. Resetting UPPER Limit Position



Move the motor to the UPPER limit position.



Press and hold the UP and DOWN buttons.



Motor jogs once.



Move the motor to the new UPPER limit.



Press and hold the MY button.



Motor jogs and UPPER Limit set.